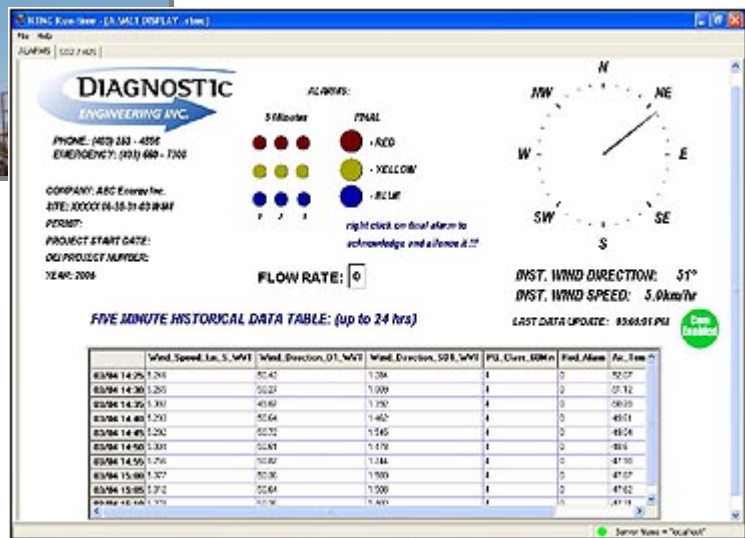
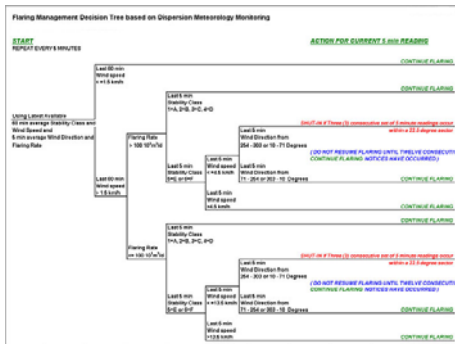


DIAGNOSTIC FLARE MANAGEMENT SYSTEM

The Diagnostic Flare Management System is used to determine when flaring may occur, based on the current Meteorological conditions.



Once a company has acquired a modelling report and flaring permit, we program the decision tree algorithms, based on on-site conditions and flow rate into our Meteorological Monitoring System.



The Flare Management System determines the conditions that flaring may occur based on the modelling and using dispersion condition measurements from a meteorological tower located on-site. When flaring is not to occur, the Flare Management System will set off visual and audible alarms and will stay on until favourable flaring conditions occur. The Diagnostic Flare Management System gives the client a true representation of Meteorological conditions that are predicted to cause exceedances based on EUB criteria.

The Flare Management System may be tailored to any decision tree algorithm and customized to meet all clients' needs also allowing for multiple flow rates.

This lightweight portable system can be accessed on-site as well as any remote wireless locations through a secure satellite connection allowing for continuous meteorological updates.